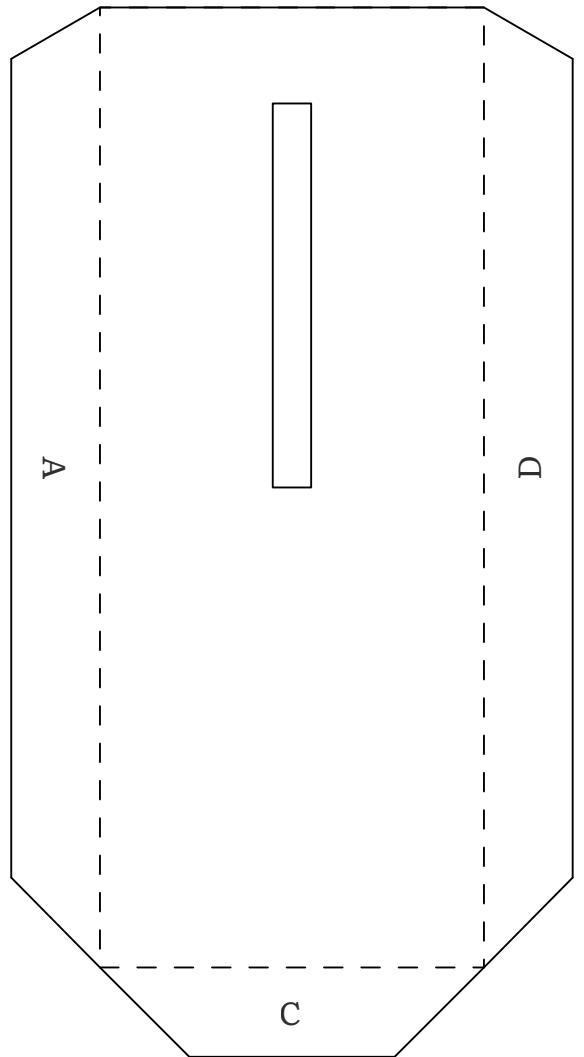
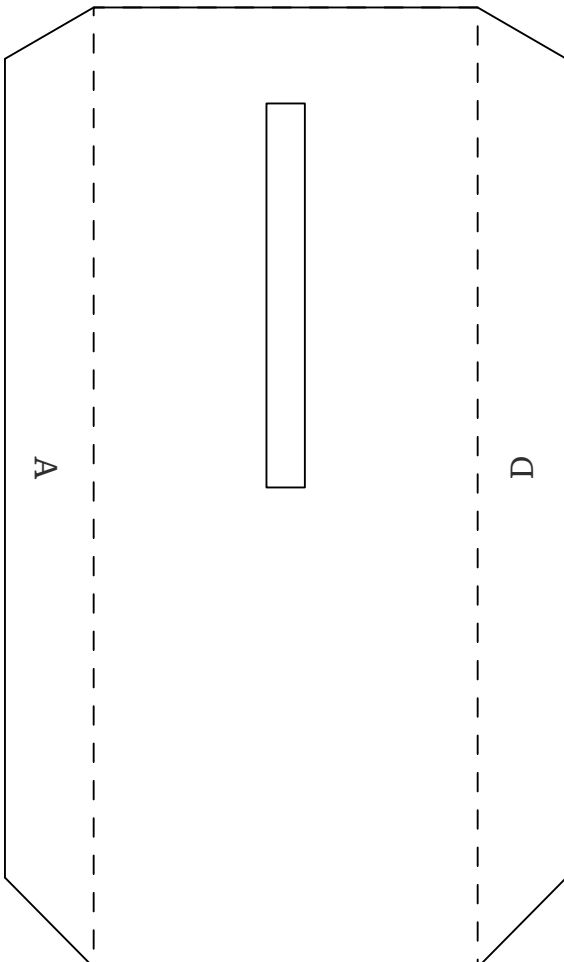
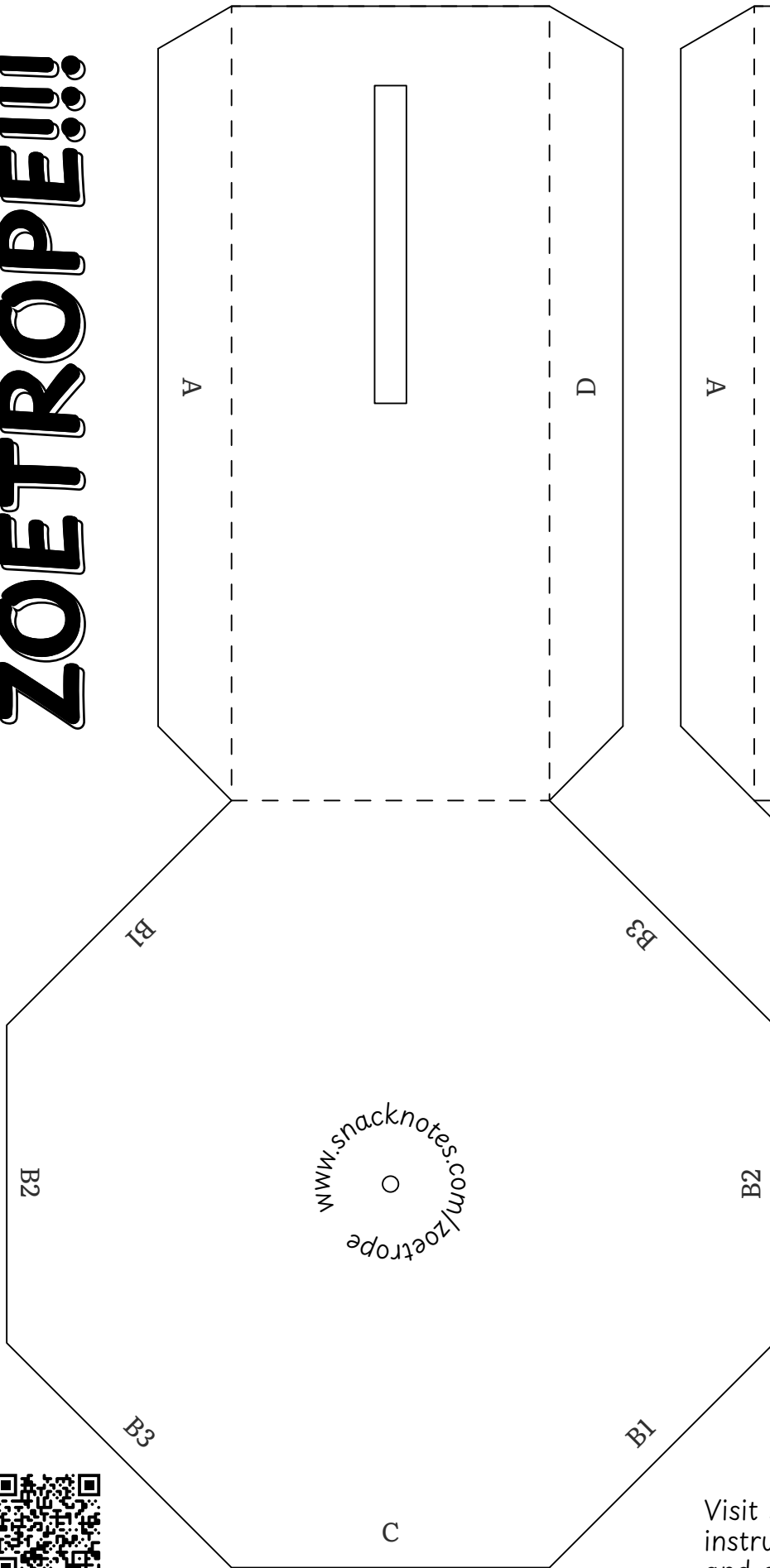


# ZOETROPE!!!



**Single-side Panel**

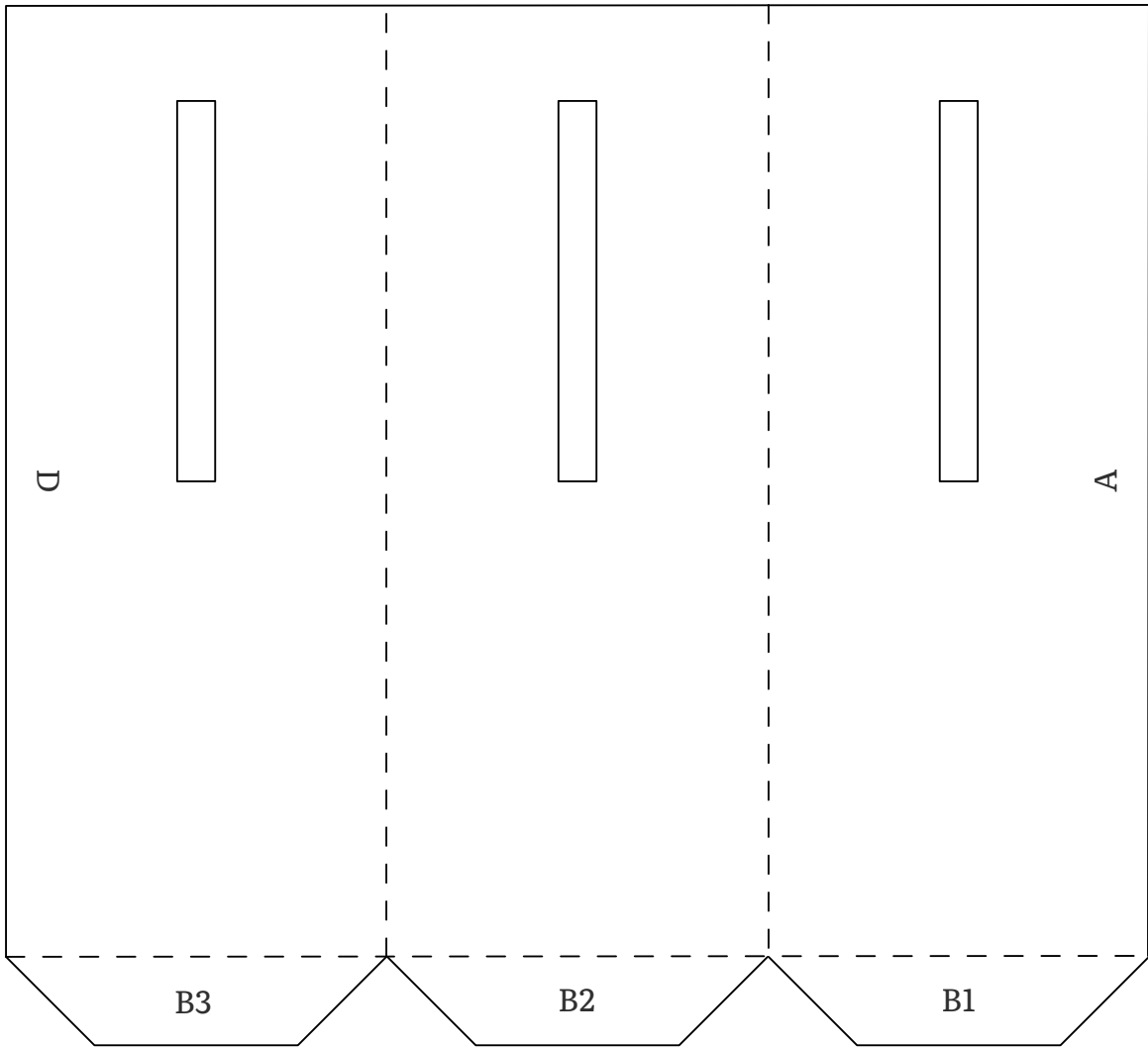
### Assembly Instructions

- 1) Cut along solid lines
- 2) Fold along dotted lines
- 3) Match letters & attach with glue or tape



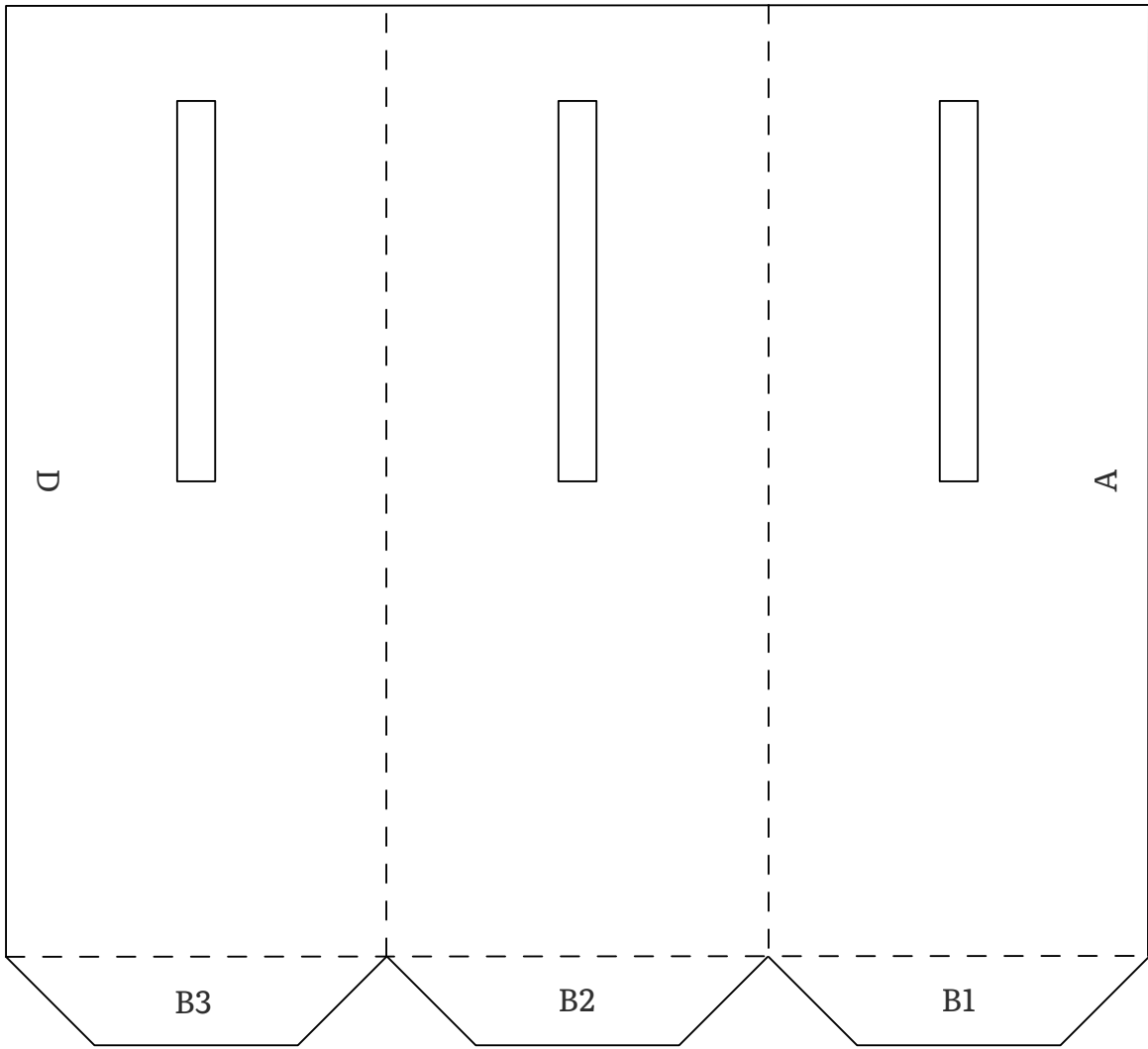
Visit [snacknotes.com/zoetrope](http://snacknotes.com/zoetrope) for instructions, animation templates, and other materials!

**Base**



**Three-side Panel**





**Three-side Panel**

